

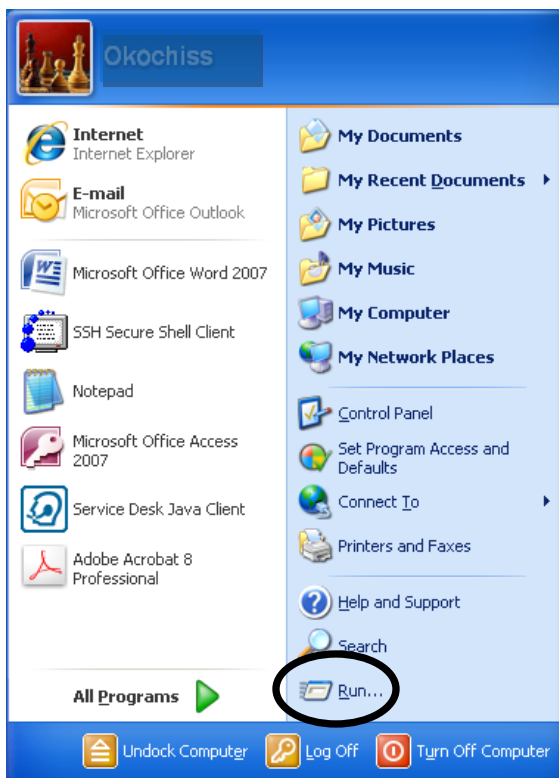
## IP and MAC Address Look-up

To assist the Information Security Office (ISO) in identifying what your System's **Physical Address** is, please follow the instructions provided below:

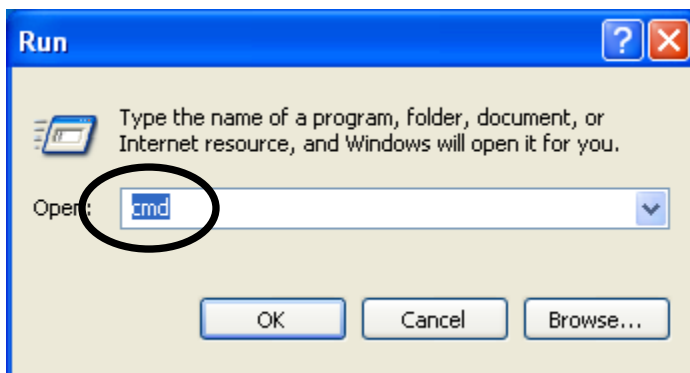
1. Click on the “**START**” button located on the lower tool bar



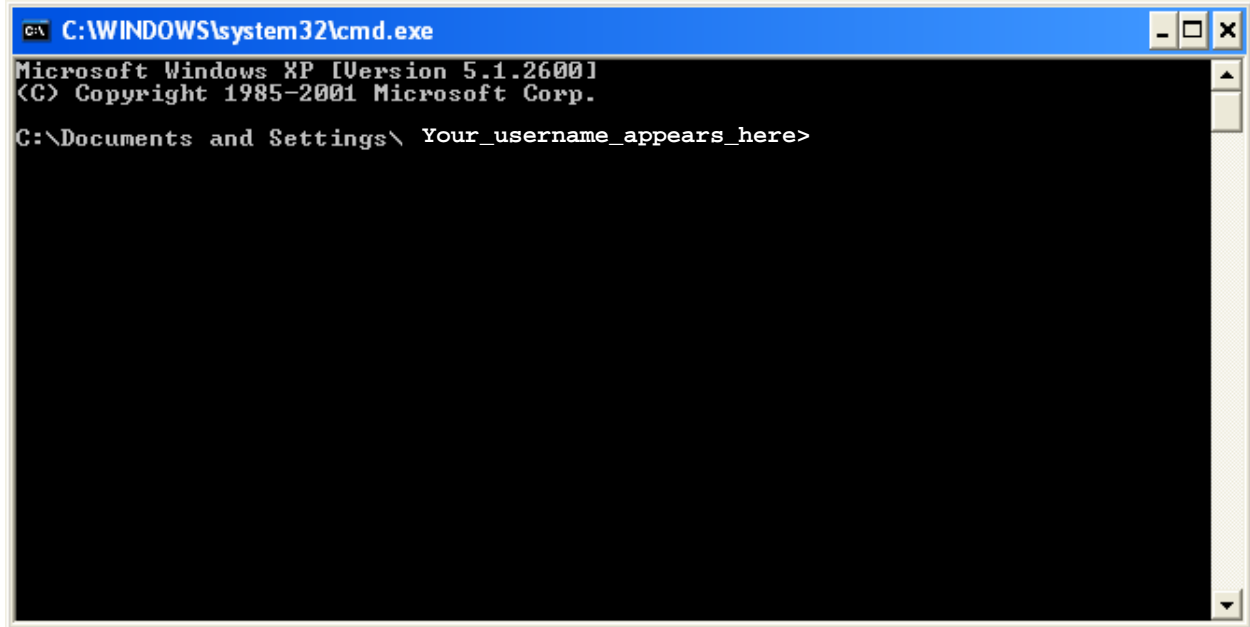
2. Next, click on “**Run**”



3. Type **cmd** in the space provided and click on “**OK**”



4. The following window will pop up

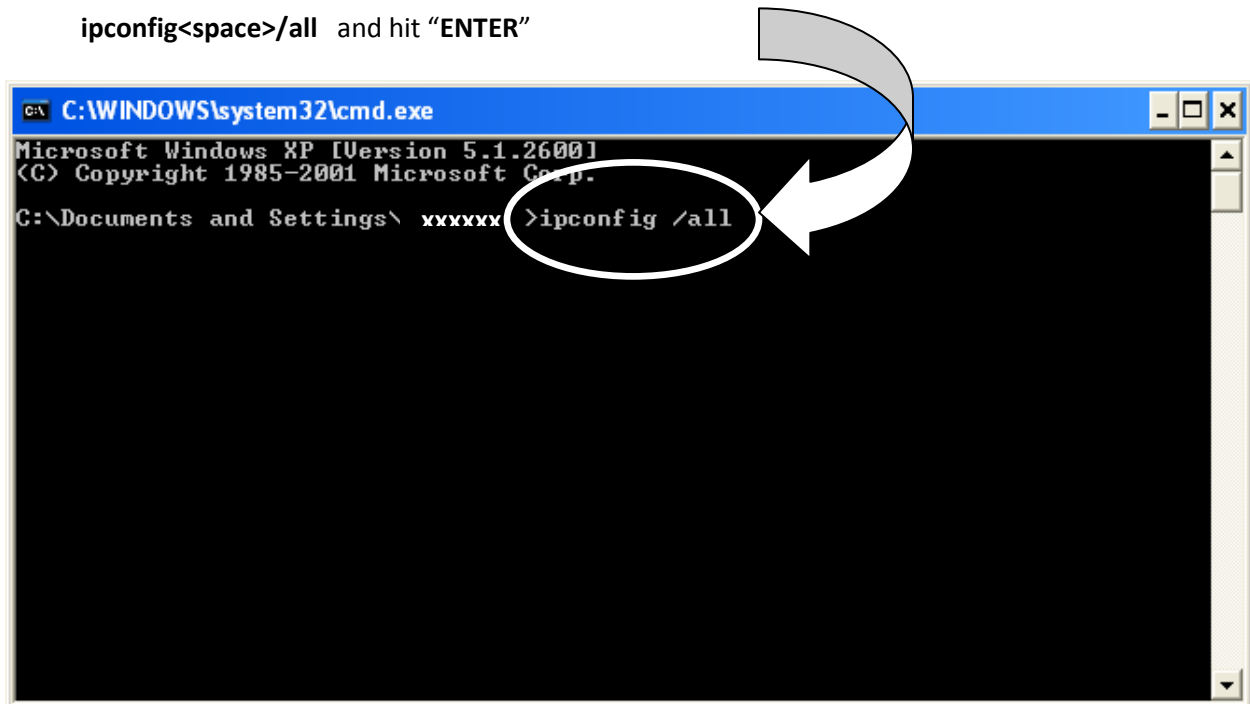


```
C:\WINDOWS\system32\cmd.exe
Microsoft Windows XP [Version 5.1.2600]
(C) Copyright 1985-2001 Microsoft Corp.
C:\Documents and Settings\ Your_username_appears_here>
```

5. Type the following command line

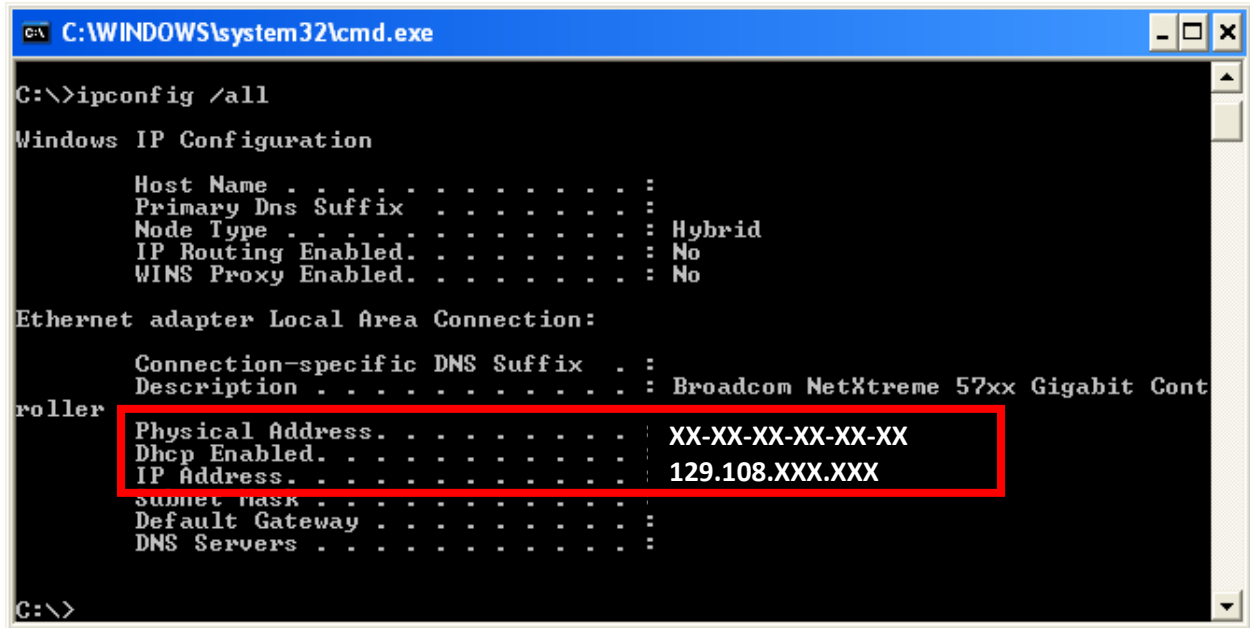
**NOTE:** <space> indicates that there is **one and only one space** between the command “ipconfig” and the switch “/all” as illustrated below (do not type any quotation marks):

**ipconfig<space>/all** and hit “ENTER”



```
C:\WINDOWS\system32\cmd.exe
Microsoft Windows XP [Version 5.1.2600]
(C) Copyright 1985-2001 Microsoft Corp.
C:\Documents and Settings\ xxxxxx >ipconfig /all
```

6. Please note both the **Physical Address** and **IP Address**, and have it ready when phoning Information Security for assistance.



```
C:\WINDOWS\system32\cmd.exe
C:\>ipconfig /all
Windows IP Configuration

    Host Name . . . . . :
    Primary Dns Suffix . . . . . :
    Node Type . . . . . : Hybrid
    IP Routing Enabled. . . . . : No
    WINS Proxy Enabled. . . . . : No

Ethernet adapter Local Area Connection:

    Connection-specific DNS Suffix . :
    Description . . . . . : Broadcom NetXtreme 57xx Gigabit Controller
    Physical Address. . . . . : XX-XX-XX-XX-XX-XX
    Dhcp Enabled. . . . . :
    IP Address. . . . . : 129.108.XXX.XXX
    Subnet Mask . . . . . :
    Default Gateway . . . . . :
    DNS Servers . . . . . :
```

7. To exit type “exit” and hit “ENTER” – the Window should close at this point.

**Information Security Office – (915) 747-6324**

**Revision History**

**First Draft:** March 14, 2008

**Revised:** January 14, 2010